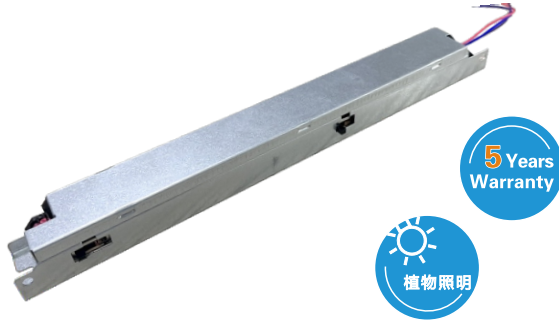


SP SERIES

SP 系列



高性价比, 面板灯、线条灯
High cost performance, Panel light, line light

隔离-0~10V调光-无频闪驱动
Isolation-0~10V dimming-No stroboscopic drive

- ▶ 输入电压/Input Voltage: 100-277Vac, H=120-347Vac
- ▶ 输入频率/Input Frequency: 50/60Hz
- ▶ 雷击浪涌/Surge Protection: 2KV
- ▶ 电流可调节/Current adjustable
- ▶ 功能配置/Function configuration:
 - I : 0-10V调光(OV可关断)/0-10V dimming,0V can returned off
 - II : 12V - 200mA独立辅助源/12V-200mAIndependentauxiliarysource
 - III: 3-5档调功率, 3-6档调色温/
3-5 power adjustment, 3-6 color temperature adjustment

产品功率 Product power

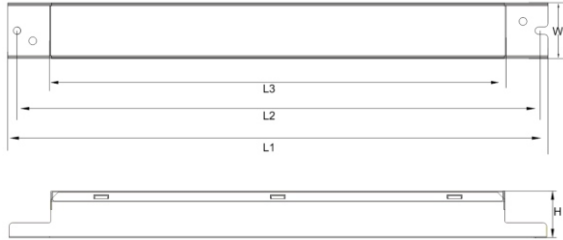
30W 40W 50W 65W 72W
80W 90W 120W 150W

应用灯具 Application luminaire

室内家居、商业照明、植物照明
Indoor household、commercial lighting、Plant lighting

产品尺寸 Product Size

单位/Unit:mm



Model NO.	L1	L2	L3	W	H
30-65W	250	240	205	30	22
72W	250	240	205	30	22
80-90W	292	283	261	30	25.5
92W	250	240	205	30	22
120W	334	328	290	30	22.5



型号参数列表 Model Parameter List

产品型号 Product Model	输入功率 PI	输出电压 Vout	输出电流 Lout	功率因素 PF	效率(@230V) Efficiency(@230V)	雷击浪涌 Surge Protection	外壳尺寸(mm) dimensions (mm)
LSP-030/040/050/064#-YYY-XV*	30-65W	21-45V	Max 1.25A	≥0.90	≥87%	2KV	裸板 L237XW27XH20
SP-030/040/050/064#-YYY-XV*	30-65W	21-45V	Max 1.25A	≥0.90	≥87%	2KV	L250XW30XH22
LSP-072#-YYY-XV*	72W	21-54V	Max 1.25A	≥0.90	≥88%	2KV	裸板 L237XW27XH20
SP-072#-YYY-XV*	72W	21-54V	Max 1.25A	≥0.90	≥88%	2KV	L250XW30XH22
TF-080/090#-YYY-XV*	80-90W	21-54V	Max 2.1A	≥0.90	≥90%	2KV	L292XW30XH25.5
GNE-150-56-XXG*	150W	27-56V	Max 4.2A	≥0.90	≥90%	6KV/6KV	L312XW37XH28
ANE-078L-YYY-XV*	92W	90-130V	Max 0.65A	≥0.90	≥90%	2KV	L250XW30XH22
NE120150080-XXF*	120W	90-130V	Max 1A	≥0.90	≥93%	6KV/6KV	L334XW30XH22.5

ANE-078&NE120 为非隔离驱动/ANE-078&NE120 is non isolated drive