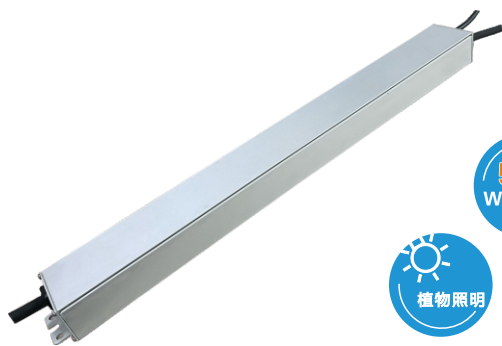


BNE SERIES

BNE 系列



360W及以上, 双火线关断专利产品
 360W and above, dual firewire shut-off patented products

非隔离-三合一调光双极无频闪-植物照明, 无余晖设计
Non isolation-three in one dimming Bipolar de strobo-
scopic-Plant lighting, No afterlow design

- ▶ 输入电压/Input Voltage: 120-277Vac/220-240Vac
- ▶ 输入频率/Input Frequency: 50/60Hz
- ▶ 雷击浪涌/Surge Protection: 6KV/6KV
- ▶ 电流可调节/Current adjustable
- ▶ 选配功能/Optional function:
 - I : 三合一隔离调光(0-10V/PWM/Resistor), 0V可关断/
Three-in-one isolation dimming (0-10V/PWM/Resistor), 0V can be turned off
 - II : 12V-200mA独立辅助源/12V-200mA Independent auxiliary source

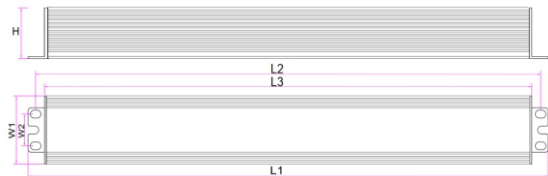
产品功率 Product power

120W 150W 360W 400W
500W 600W 800W 1200W

应用灯具 Application luminaire

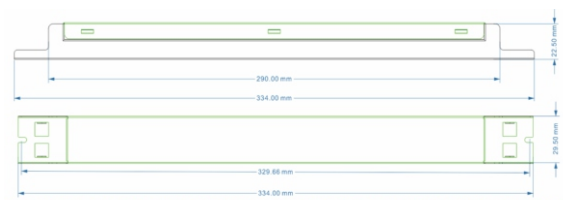
植物照明 Plant lighting

产品尺寸 Product Size



Model NO.	L1	L2	L3	W1	W2	H
360W	320	307	290	43	20	32
400W	320	307	290	43	20	32
500W	395	382	365	43	20	32
600W	425	412	400	43	20	32
800W	455	442	425	43	20	32
1200W	455	442	425	90	/	44.5

单位/Unit: mm



120W



150W

型号参数列表 Model Parameter List

产品型号 Product Model	输出功率 PO	输出电压 Vout	输出电流 Lout	功率因素 PF	效率(@230V) Efficiency(@230V)	雷击浪涌 Surge Protection	外壳尺寸(mm) dimensions (mm)
NE120150080-XXF*	120W	90-130V	0.5-1A	≥0.90	≥93%	6KV/6KV	L334XW30XH22.5
ANE-120L-060-XV*	120W	160-260V	0.35-0.6A	≥0.90	≥95%	6KV/6KV	L334XW30XH22.5
BNE-360#-160-XV*	360W	200-360V	0.5-1.6A	≥0.90	≥95%	2KV/2KV	裸板 L270XW35XH28
BNE-360#-160-XV*	360W	200-360V	0.5-1.6A	≥0.90	≥95%	6KV/6KV	L320 290 XW43XH32
BNE-408#-180-XV*	400W	200-360V	0.5-1.8A	≥0.90	≥95%	6KV/6KV	L320(290)XW43XH32
BNE-500#-220-XV*	500W	200-360V	0.7-2.2A	≥0.90	≥96%	6KV/6KV	L395(365)XW43XH32
BNE-600#-260-XV*	600W	200-360V	1-2.6A	≥0.90	≥96%	6KV/6KV	L425(400)XW43XH32
BNE-800#-350-XV*	800W	200-360V	1.8-3.5A	≥0.90	≥96%	6KV/6KV	L455(425)XW43XH32
BNE-1200#-520-XV*	1200W	200-360V	2-5.2A	≥0.90	≥96%	6KV/6KV	L455(425)XW90XH44.5
GNE-150-56-XXG*	150W	27-56V	Max 4.2A	≥0.90	≥90%	6KV/6KV	L312XW37XH28

150W为隔离驱动/150W is isolated drive
1200W机型设计开发中/1200w Model design and development